

Finále ABL podzim 2018 - Pardubice



Oil Pattern Distance:	36 Feet	Reverse Brush Drop:	36 Feet	Oil Per Board:	50 uL
Forward Oil Total:	13.95 mL	Reverse Oil Total:	10.45 mL	Volume Oil Total:	24.4 mL
Forward Boards Crossed:	279 Boards	Reverse Boards Crossed:	209 Boards	Total Boards Crossed:	488 Boards

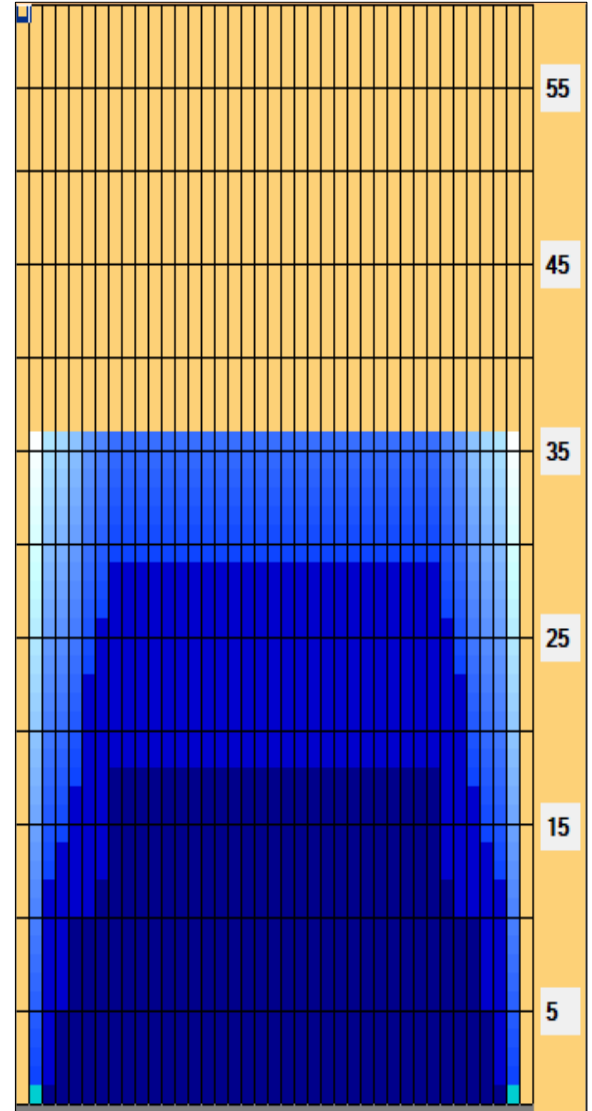
	Start	Stop	Loads	Speed	Crossed	Start	End	Feet	T.Oil
1	2L	2R	2	10	74	0.0	1.4	1.4	3700
2	4L	4R	2	14	66	1.4	5.3	3.9	3300
3	5L	5R	2	18	62	5.3	10.4	5.1	3100
4	7L	7R	1	18	27	10.4	12.9	2.5	1350
5	8L	8R	2	18	50	12.9	18.0	5.1	2500
6	2L	2R	0	22	0	18.0	36.0	18.0	0

Conditioner: Fire
TransferType: Transfer Brush

Forward
Reverse
More

	Start	Stop	Loads	Speed	Crossed	Start	End	Feet	T.Oil
1	2L	2R	0	30	0	36.0	29.0	-7.0	0
2	8L	8R	1	22	25	29.0	25.9	-3.1	1250
3	7L	7R	1	22	27	25.9	22.8	-3.1	1350
4	6L	6R	2	22	58	22.8	16.6	-6.2	2900
5	5L	5R	1	18	31	16.6	14.1	-2.5	1550
6	4L	4R	1	18	33	14.1	11.6	-2.5	1650
7	3L	3R	1	18	35	11.6	9.1	-2.5	1750
8	2L	2R	0	18	0	9.1	0.0	-9.1	0

Forward
Reverse
More



Item Description	3L-7L:18L-18R Outside Track:Middle	8L-12L:18L-18R Middle Track:Middle	13L-17L:18L-18R Inside Track:Middle	18L-18R:17R-13R Middle: Inside Track	18L-18R:12R-8R Middle:Middle Track	18L-18R:7R-3R Middle:Outside Track
Track Zone Ratio	1.9	1	1	1	1	1.9

